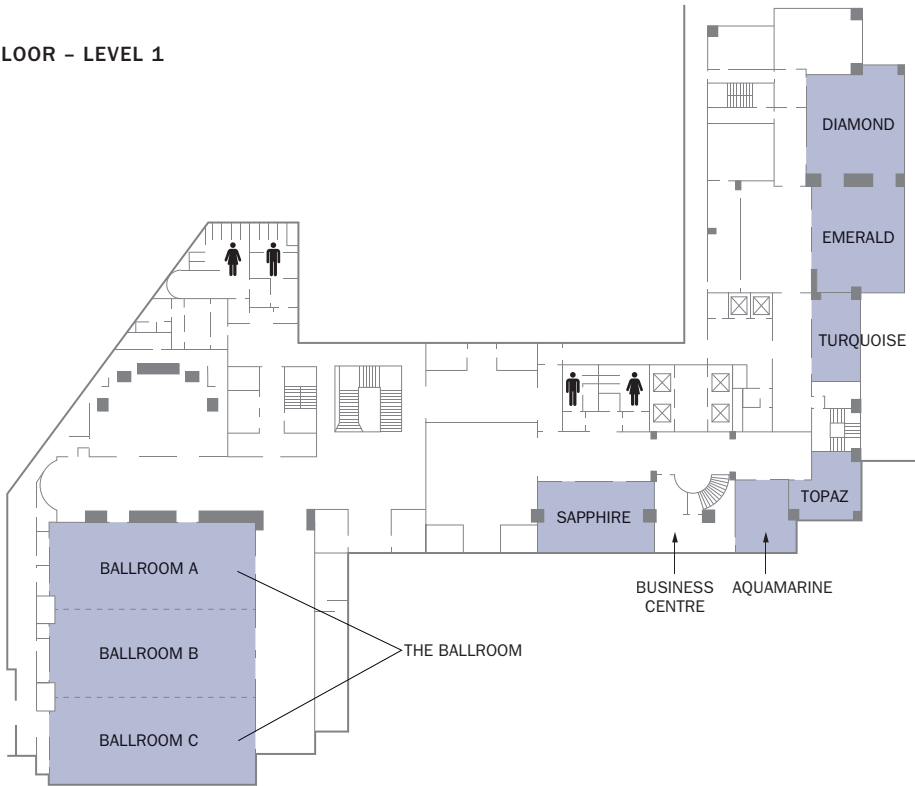




With more than 4,000 square metres (43,000) of flexible event space, Fairmont Amman has the ideal venue for your next event. Our ballroom can host nearly 1,000 guests at a cocktail reception, while our function rooms are perfect for smaller meetings and strategy sessions. No matter which of our venues you choose, though, you will have access to our professional event staff, delectable menus, state-of-the-art audiovisual equipment and everything else needed to make the experience truly unforgettable.

FLOOR PLAN

FUNCTION FLOOR - LEVEL 1

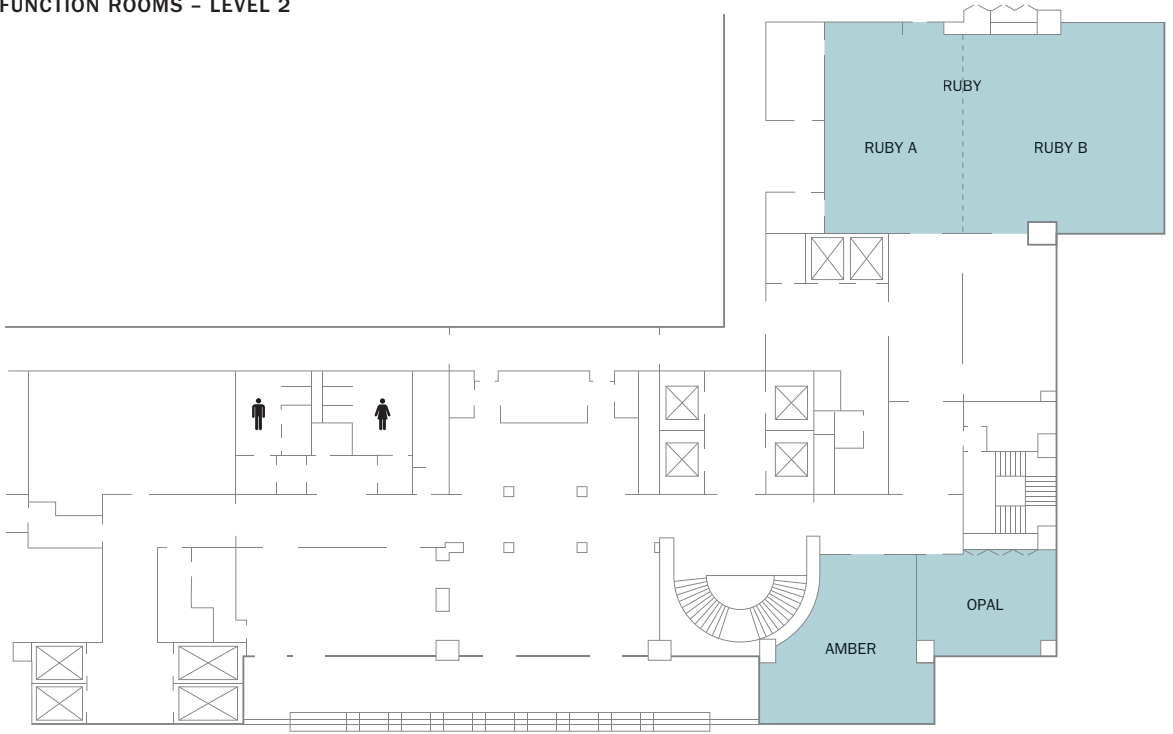


CAPACITY CHART

| | OVERALL DIMENSIONS | | SQUARE | | HEIGHT | | CAPACITIES | | | | |
|--------------|--------------------|-------------|--------|--------|--------|--------|------------|-----------|---------|---------|-----------|
| | FEET | METRES | FEET | METRES | FEET | METRES | BANQUET | CLASSROOM | THEATRE | U-SHAPE | BOARDROOM |
| AQUAMARINE | 25' 7" x 15' 6" | 7.8 x 4.7 | 352 | 23.7 | 11' 7" | 3.5 | - | 17 | 37 | 10 | 14 |
| THE BALLROOM | 97' 5" x 77' 1" | 29.7 x 23.5 | 7,363 | 684 | 23' | 7 | 580 | 443 | 836 | - | - |
| BALLROOM A | 77' 1" x 32' 4" | 23.5 x 9.9 | 2,454 | 228 | 23' | 7 | 120 | 148 | 284 | - | - |
| BALLROOM B | 77' 1" x 32' 4" | 23.5 x 9.9 | 2,454 | 228 | 23' | 7 | 120 | 148 | 284 | - | - |
| BALLROOM C | 77' 1" x 32' 4" | 23.5 x 9.9 | 2,454 | 228 | 23' | 7 | 120 | 148 | 284 | - | - |
| DIAMOND | 38' x 35' 9" | 11.6 x 10.9 | 1,432 | 133 | 9' 11" | 3 | 70 | 74 | 116 | 35 | 28 |
| EMERALD | 38' x 34' 8" | 11.7 x 10.6 | 1,292 | 120 | 10' 6" | 3.2 | 60 | 64 | 116 | 35 | 26 |
| SAPPHIRE | 43' 3" x 27' 1" | 13.2 x 8.3 | 1,033 | 96 | 10' 4" | 3.1 | 50 | 47 | 91 | 35 | 28 |
| TOPAZ | 26' 6" x 21' 1" | 8.1 x 6.4 | 543 | 50.5 | 11' 7" | 3.5 | - | 26 | 47 | 20 | 16 |
| TURQUOISE | 31' 4" x 16' 11" | 9.6 x 5.2 | 519 | 48.2 | 10' 7" | 3.2 | - | 26 | 51 | 12 | 22 |

FLOOR PLAN

FUNCTION ROOMS - LEVEL 2



CAPACITY CHART

| | OVERALL DIMENSIONS | | SQUARE | | HEIGHT | | CAPACITIES | | | | |
|------------|--------------------|-------------|--------|--------|--------|--------|------------|-----------|---------|---------|-----------|
| | FEET | METRES | FEET | METRES | FEET | METRES | BANQUET | CLASSROOM | THEATRE | U-SHAPE | BOARDROOM |
| AMBER | 26' 1" x 20' 2" | 8 x 6.2 | 538 | 50 | 10' 2" | 3.1 | - | 28 | 56 | 20 | 22 |
| OPAL | 32' 4" x 16' 11" | 9.9 x 5.2 | 539 | 50.1 | 10' 2" | 3.1 | - | 26 | 47 | 17 | 16 |
| RUBY A | 40' 10" x 28' 4" | 12.5 x 8.6 | 1,063 | 98.7 | 10' 2" | 3.1 | 50 | 47 | 98 | 32 | 26 |
| RUBY B | 39' x 36' 1" | 11.9 x 11 | 1,514 | 140.7 | 10' 2" | 3.1 | 80 | 72 | 146 | 40 | 28 |
| RUBY A + B | 68' x 35' 10" | 20.7 x 10.9 | 2,680 | 249 | 10' 2" | 3.1 | 150 | 142 | 290 | 66 | 56 |

Fairmont Amman
 6 Beirut Street, 5th Circle
 Abdoun, P.O. Box 831370
 Amman, 11183, Jordan
 T +962 6 5106000
 F +962 6 5106001
fairmont.amman@fairmont.com
fairmont.com/amman



Fairmont
 AMMAN